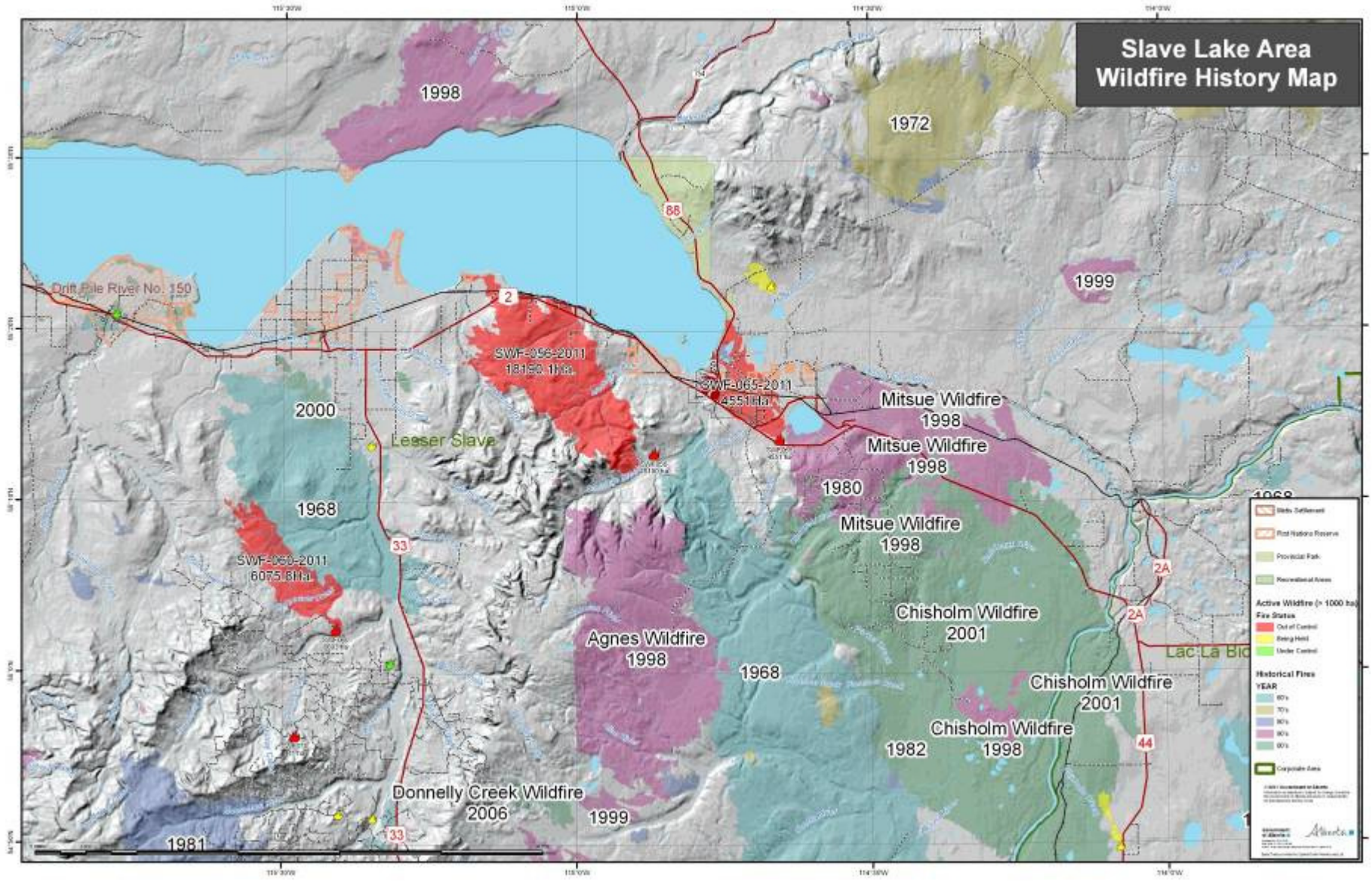


SLAVE LAKE
MAY 14 & 15 2011

In November of 2011 the RCMP's initial investigation concluded the cause of this wildfire was ARSON.

Slave Lake Area Wildfire History Map

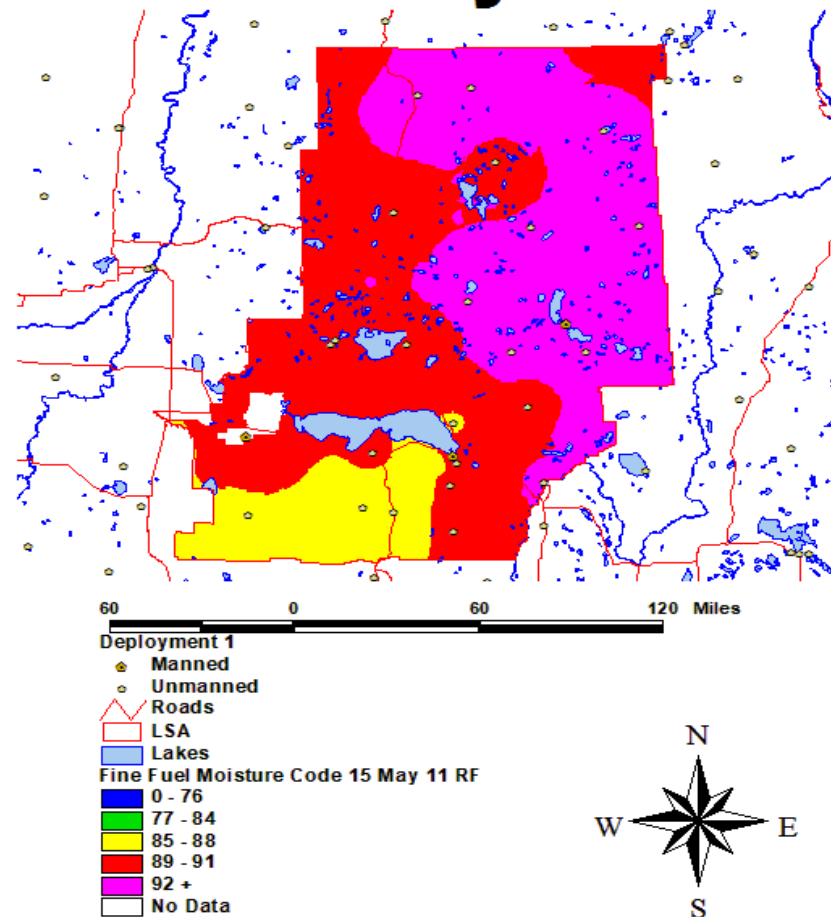


FIRE WEATHER MAY 14, 2011

Station ID	Max Temp	RH	Wind Speed	Gust	FFMC	DMC	DC	ISI	BUI	FWI
CY	23	17	32	48	94	32	28.7	36.9	49	52
DM	17	30	68	104	89	12	42	109.2	14	61
FT	18.5	29	58	84	90	15	193	80.3	26	64
MN	20	27	40		91	18	213	37.4	29	42

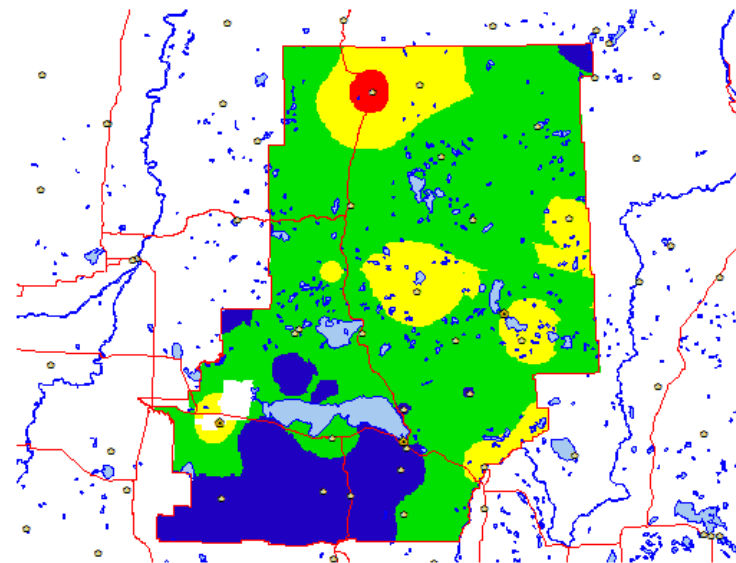
Fine Fuel Moisture Code

FFMC May 15 AM



Build Up Index

BUI May 15 AM



60 0 60 120 Miles

Deployment 1

- Manned
- Unmanned
- Roads

LSA

Lakes

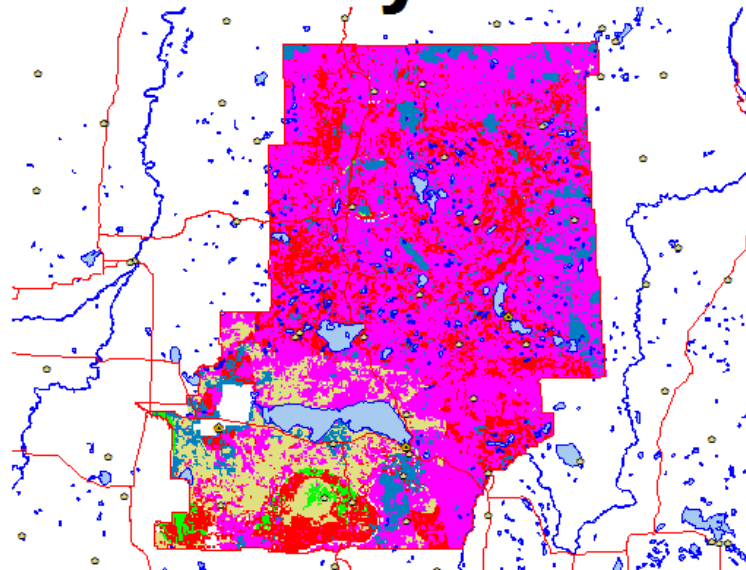
Buildup Index 15 May 11 RF

- 0 - 24
- 25 - 40
- 41 - 60
- 61 - 89
- 90 +
- No Data



Rate of Spread

ROS May 15 AM



60 0 60 120 Miles

Deployment 1

● Manned

○ Unmanned

△ Roads

□ LSA

□ Lakes

Rate of Spread 15 May 11 (RF)

0 - 1 (m / min)

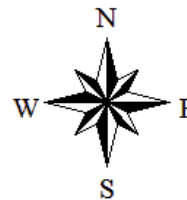
2 - 4

5 - 8

9 - 14

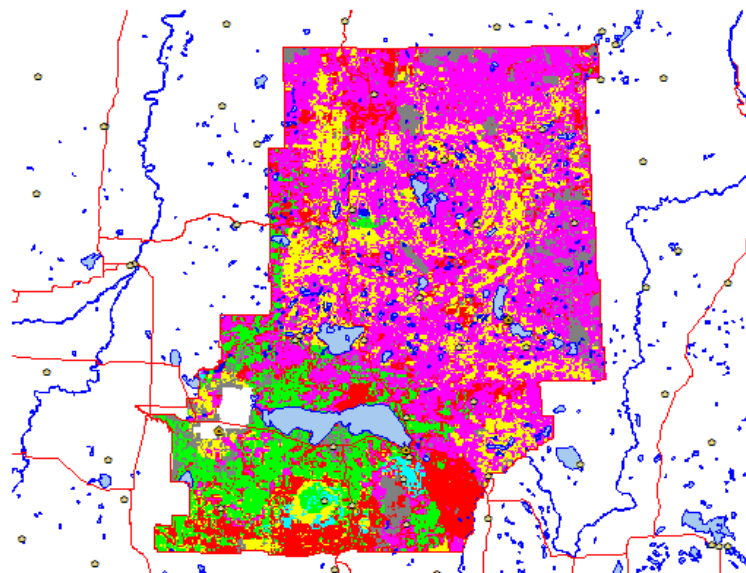
15 +

No Data



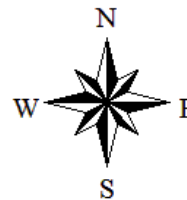
Head Fire Intensity

HFI May 15 AM



60 0 60 120 Miles

Deployment 1
● Manned
○ Unmanned
△ Roads
□ LSA
□ Lakes
Head Fire Intensity 15 May 11 RF
■ Non-Fuel
■ Rank 1
■ Rank 2
■ Rank 3
■ Rank 4
■ Rank 5
■ Rank 6
□ No Data



5 Minutes, Saturday May 14, 2011



15 minutes May 14, 2011



33 minutes May 14, 2011



MAY 15 Evening







Air Tanker Action



EVACUATION



SPOTFIRES









Government Centre



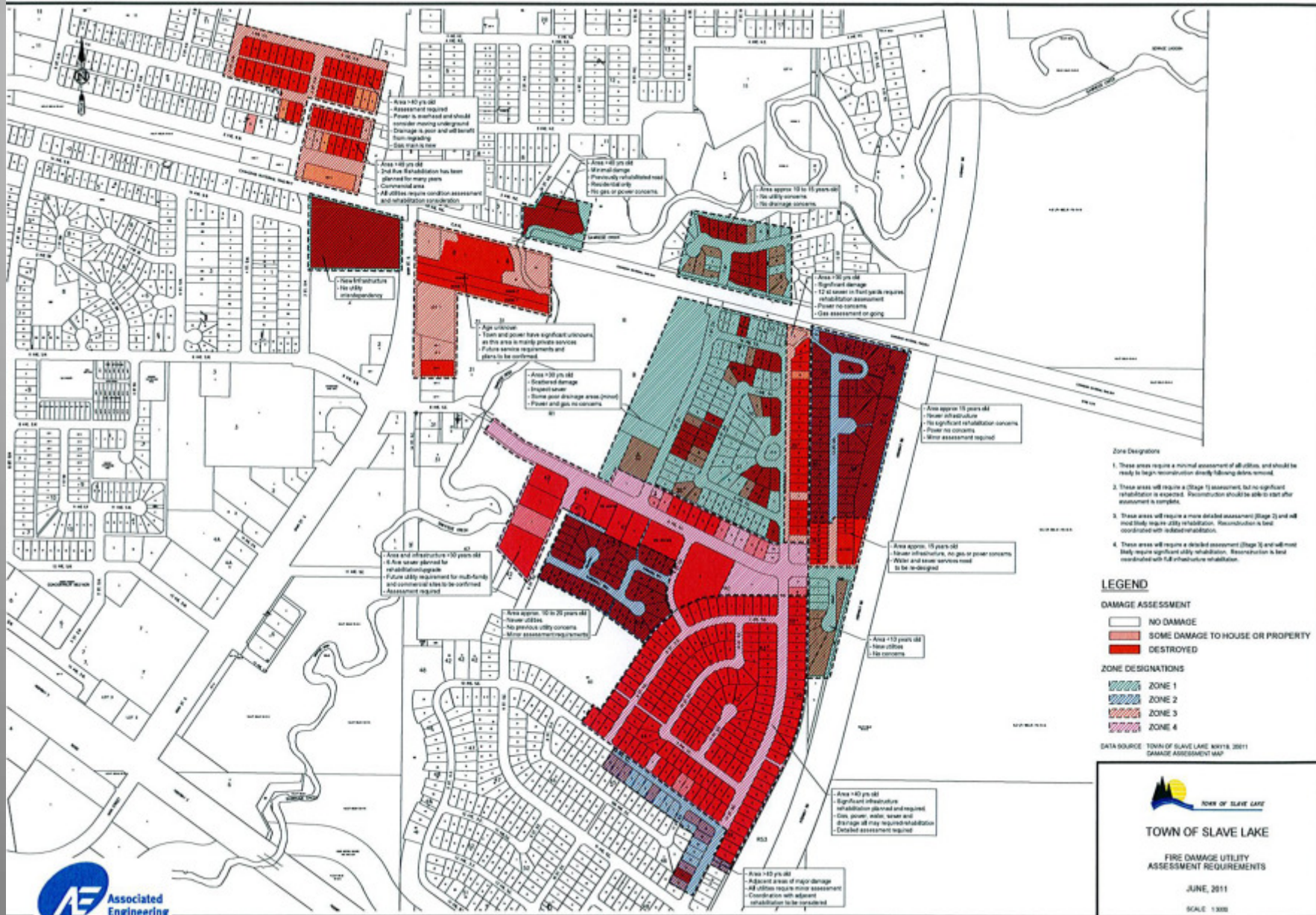




Immediate Needs

- Fire Closed All Three Highways Out of Town
- Evacuation of 14, 000 people
- Temporary Staging of Evacuees with in Town
- Power, Gas, Telephone and Cellular Services Outage
- Evacuation of Seniors, Hospital Patients and those without transportation
- Shelter for displace people

Burn Area



Consequences of Fire

- Landfill Use
- Temporary Housing
- Infrastructure Damage
- Tax Roll
- Volunteer Fire Fighter Recruitment
- Social Problems
- Loss of Professional Staff
- Reconstruction Efforts (Structures)
- Vegetation Loss

- Loss of Regional Library
- Loss of Government Centre
- Loss of RCMP members
- Loss of 20 teachers
- Loss of 5 Doctors
- Loss of Municipal Workers
- Loss of Families

OVERALL GOAL

- **To return Slave Lake to the same condition, with the same population, as before the fire.**
- **Estimated time frame – 5 years**
- **Estimated infrastructure redevelopment 7 years**

Landfill



Temporary Housing



9 MONTHS LATER

SOCIAL ISSUES

- Family Violence Crimes up 400%**
- Youth Social Worker Intervention up 200%**
- Increased alcoholism and mental health issues**
- Post Traumatic Stress Disorder**
- Loss of 2 churches**
- Homeless (720 Families Displaced)**
- Over 10,000 people evacuated in area**

Financial Cost

- Insurance Bureau of Canada estimates payout by insurance companies to be over \$700 million**
- Funding from Alberta Government \$289 million**
- Donations Rotary - \$1.5 million plus**
- Donations Red Cross - \$3.2 million**
- Private Donations - \$12 million (est.)**

Overall cost will be over \$1 billion!!

Re-construction Zoning

- **Town divided into 4 zones based on the level of damage to infrastructure (roads, gas lines, water lines, sewage, electrical)**
- **All Zones cleared for re-construction**
- **170 building permits handed out**
- **74 houses under construction**

Housing Challenges

- **Families needing housing down from 370 to 200.**
- **October 31 all families requiring housing under a roof**
- **4 areas being developed**
 - **Phoenix (hwy 88 east) 140 trailers**
 - **Fournier (ball diamonds) 78 trailers**
 - **Area 78 (across from ball diamonds) 72 trailers**
 - **SRD trailers – 14 trailers**

Structural Losses

- **389 structures destroyed (town only)**
- **Includes**
 - **2 churches**
 - **1 bar**
 - **6 apartment buildings**
 - **1 library**
 - **1 government centre**
 - **5 businesses**

CURRENT RECONSTRUCTION

- **Of the 389 structures lost:**
 - **309 houses have been through demolition**
 - **6 lots have been abandoned**
 - **74 Houses now are under construction**
 - **170 Building Permits as of March 1, 2011**

BURNED HOMES



BASEMENTS





SITE DEMOLITION



SITE ABANDONMENT



SITE RECONSTRUCTION





BURNED VEHICLES



METAL RECOVERY





BEFORE AND AFTER





Fire Smart Initiatives

- Hazard Identification in Region
- Vegetative Management
- Additional Fire Suppression Equipment
- Construction of Additional Egress Routes
- Home Owner Initiatives
- Hiring of Fire Smart Crew Cross Trained in Structural and Wild Fire
- Public Education
- Creation of Fire Smart and EOC Training Centre
- Back Up Generators

Fire Boss and Asphalt Siding





CEMENT BOARD



CHALLENGES

- **Accommodation for population**
- **Accommodation for workers**
- **Tax Role and Long Term Costs**
- **Infrastructure Re-development**
 - **Utilities**
 - **Roads**
 - **Sidewalks**
- **Social Services**
- **Improving Public Communications**
- **High Intensity Residential Fire Building Code**

The Positives

- **Replacement of Recreational Facilities**
- **Establishment of Evacuation Centre**
- **Improved Infrastructure (roads, water, utilities)**
- **Establishment of the Fire Smart Regional Action Team (FRAT)**
- **Formation of Tri-Council (Town, MD and First Nation)**
- **Road Intersection Re-development**
- **Identification of Best Practices**

THANK YOU

- **Sustainable Resource Development**
- **Air Attack Officers and Tanker Pilots**
- **All Wildland Firefighters**
- **RCMP**
- **Response Fire Departments**
- **Alberta Emergency Management Agency**

In Memory of Jean-Luc Deba